

# Evidence-Based Health Promotion@Work (Promo@Work) Results of the SRC funded consortium

**Consortium PI: Docent Jaana Laitinen**, Finnish Institute of Occupational Health

Deputy PI: Docent Tuula Oksanen, Finnish Institute of Occupational Health

## Sub-project PIs:

Research Director Kirsi Heikkilä-Tammi, Wellbeing at Work Research Group, Tampere University

Director Matti Muhos, MicroENTRE Research Group, University of Oulu

Professor Harri Oinas-Kukkonen, Oulu Advanced Research on Service and Information Systems (OASIS), University of Oulu

Professor Johanna Ruusuvuori, Faculty of Social Sciences, Social Psychology, Tampere University

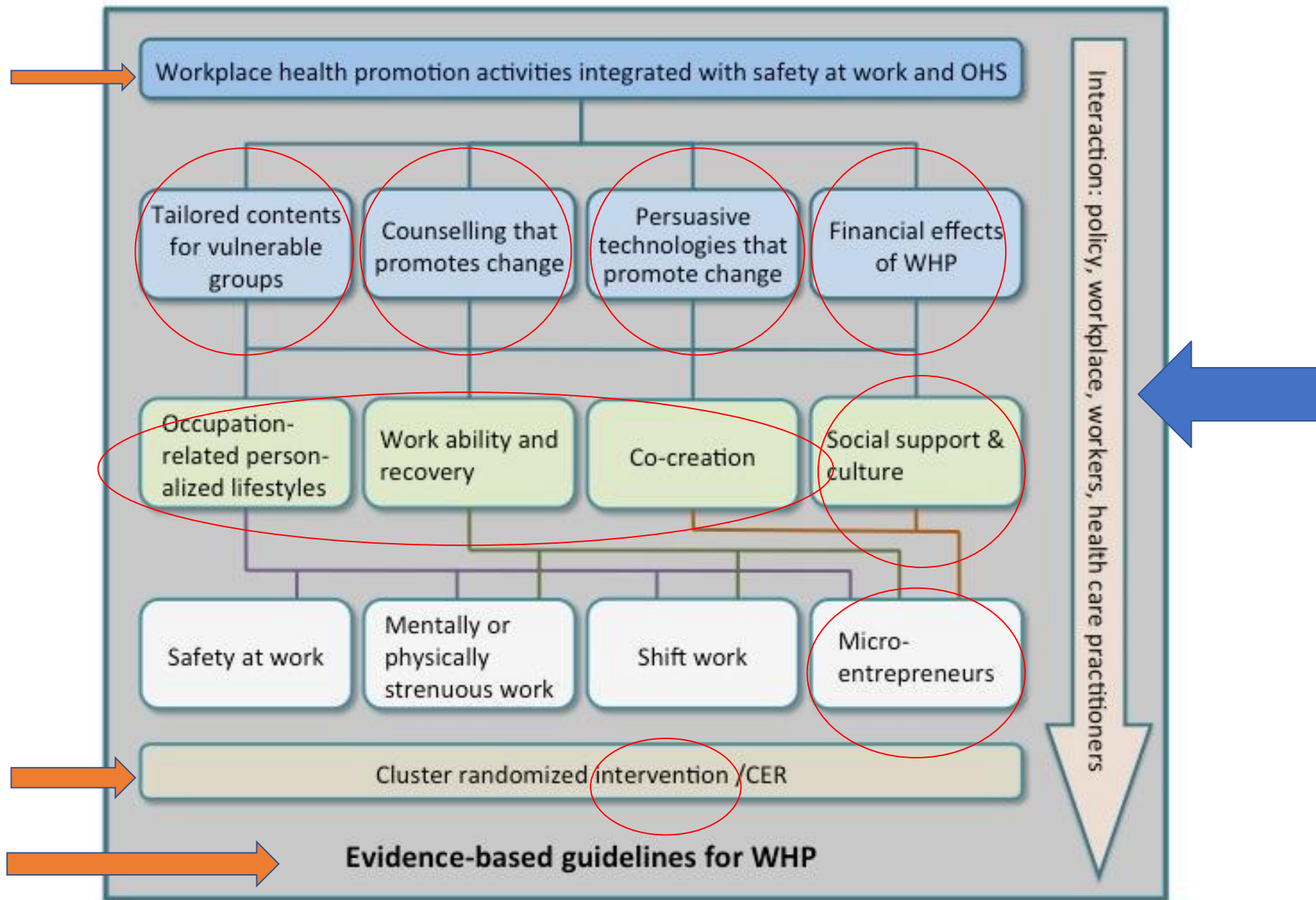
Professor Stephanie Stock, Institute for Health Economics and Clinical Epidemiology, University Hospital of Cologne



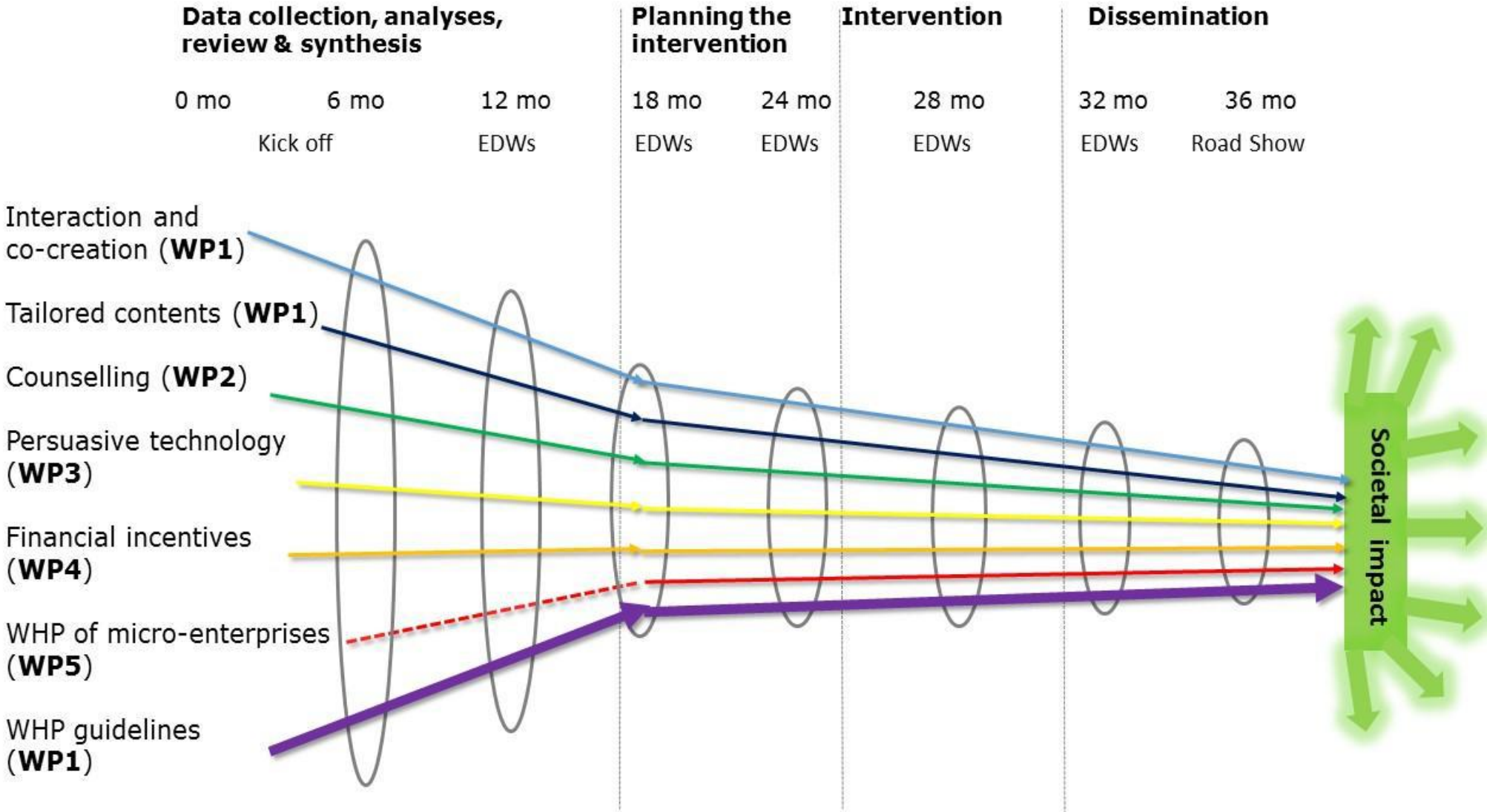




# Aim of the Study



April 2016 – August 2019



# Foci of the study:



# Societal Impact of the Study

- Nearly 200 Presentations to Stakeholder Groups
- 50 Scientific Publications, of which 34 peer reviewed
- 36 Courses and Seminars
- 5 International Funding Applications
- 72 Public Events for Target Groups
- 24 Committee Meetings with Policy Makers
- 35 Publications intended for General Public
- 66 Interviews or Presentations of the Project in the Media
- 68 Social Media Articles
- 4 Public Events for Large Audiences (1150 participants)